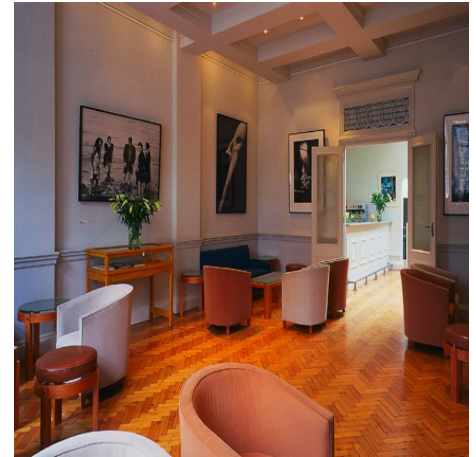


# The H.C. Marylebone



## Main Description:

The H.C. is an elegant, light and spacious venue in the heart of fashionable Marylebone, with its village feel sandwiched in between Baker and Oxford streets.

The period façade is the perfect complement to the modern venue housed within. The Grand Hall is one of the best event spaces in Central London providing your event with an elegant blank canvas. The all-important wow-factor is provided by the balcony that allows your guests a superb vantage point of the event happening below.

The H.C. also features additional smaller spaces to complement the Great Hall, including a reception room, dedicated bar area and a number of breakout rooms which are ideal for small meetings

## Capacities:

	Great Hall	Reception Room	Breakouts
Seated	200	40	Upto 20
Reception Style	350	50	-
Theatre Style	275	30	25

for further information, to check the diary and to arrange your viewing please contact

[londonvenuecollection.co.uk](http://londonvenuecollection.co.uk)

0870 383 4595